

The café building is an 80-year-old kominka (old private house) that was previously used as a ryokan for people travelling to Sukawa Kogen hot springs. The house has since been renovated and revived as KURIKOMA CHAYA Kominka Stay & Café. (The café also once received the 8th Ichinoseki City Landscape Development Award, Landscape Category.)



栗駒茶屋

KURIKOMA CHAYA
Kominka Stay & Café

kurikomachaya.com



☎ 0191-39-2855
🕒 10:00-17:00



It is truly amazing to be able to wake up comfortably in the morning to the sound of birds chirping and the bright morning sunlight as it shines in from the wide veranda.

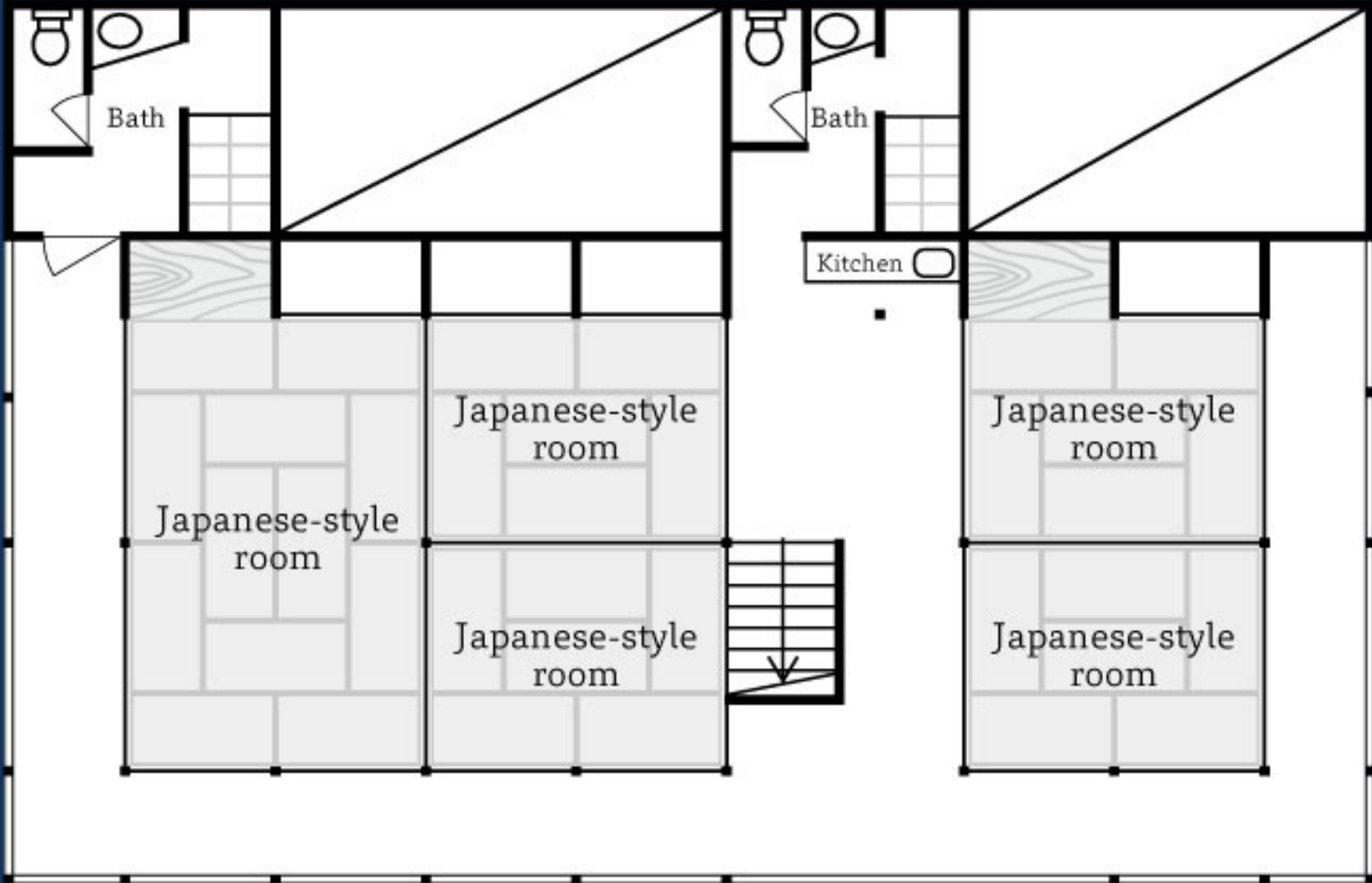


KURIKOMA CHAYA Kominka Stay & Café is fully furnished with two shower rooms and two restrooms. Futons and amenities are available for a number of guests.

Charge From ¥5,000 per person per night (tax excluded), limited to one group of guests per day

Check-in time: 4 p.m. to 9 p.m. / Check-out time: Up to and including 10 a.m. / Maximum number of guests: 13 persons

9~13 persons	¥5,000 per person
5~8 persons	¥5,500 per person
4 persons	¥6,000 per person
3 persons	¥8,000 per person
2 persons	¥12,000 per person
1 person	¥24,000 per person



It is also equipped with water supply facilities, a microwave oven, and a water heater. Feel free to use these at any time during your stay.

Mt. Kurikoma, which spans the borders of the prefectures of Iwate, Miyagi, and Akita, is a mountain featuring a deciduous broad-leaved forest, beautiful & fresh greenery, and autumn leaves. KURIKOMA CHAYA Kominka Stay & Café is located at the foot of Mt. Kurikoma. If in need of a little break, please come and visit us.



kurikomachaya.com

栗駒茶屋

KURIKOMA CHAYA Kominka Stay & Café



☎ 0191-39-2855



The café on the first floor specializes in kakigori (a Japanese shaved-ice treat), which is the perfect dessert for a hot summer day in Japan, and the café offers other desserts too. Please come and enjoy these treats while relaxing in the atmosphere of our kominka.

Access

By car

Tohoku EXPWY (20mins)
Ichinoseki I.C. via Route 237 to Kurikoma

By public
transport

Tohoku
Shinkansen
Ichinoseki St. Bus to Sukawa-Onsen 1min
on foot Honedera



Business hours

1F café 10 a.m. to 5 p.m.
(Irregular holidays)

2F Kominka guest house
(Reservation required)

